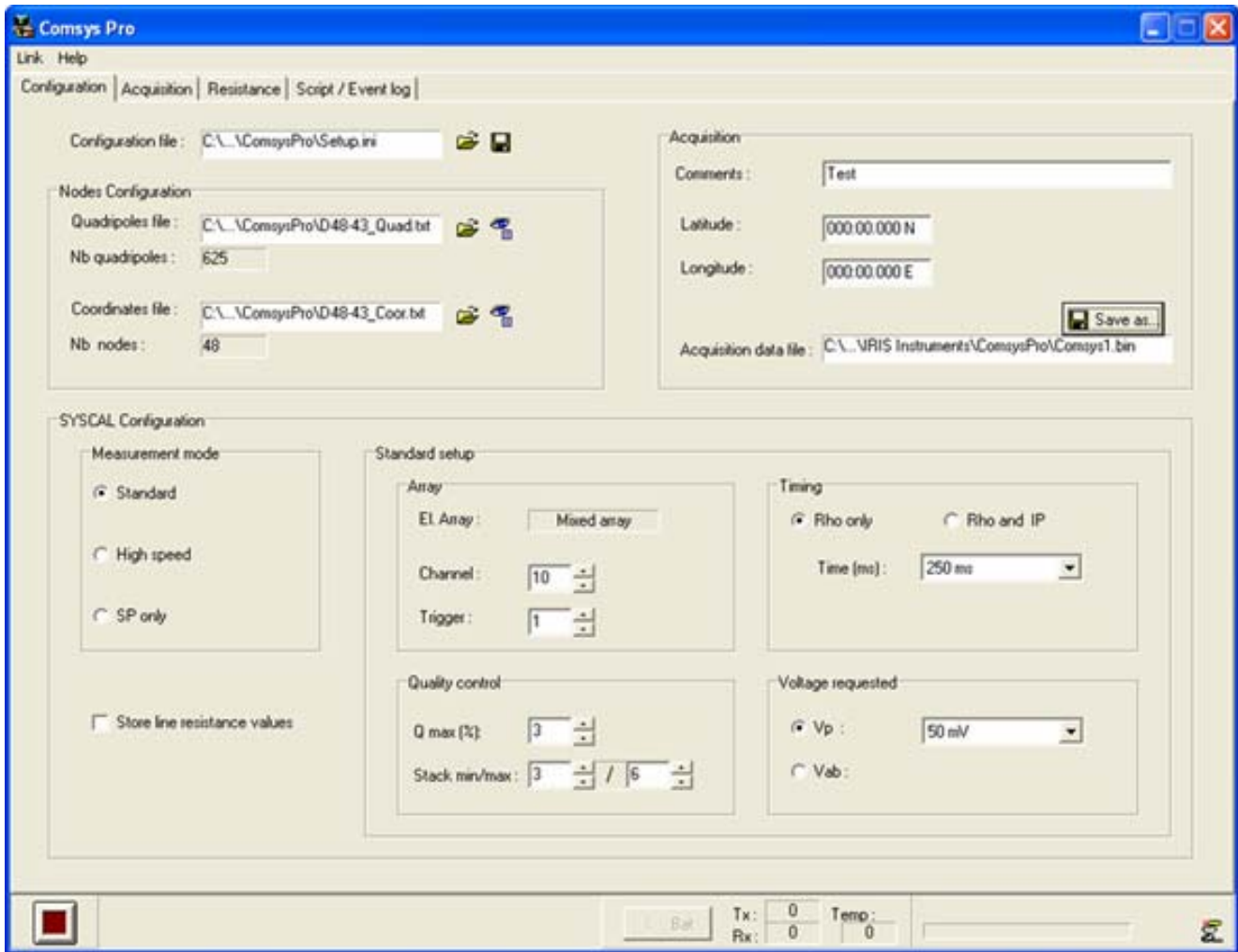


Syscal Pro Resistivity Monitoring(ERT) System

Turn Key System for Remote, Unattended Monitoring



The Syscal Pro is a ten channel resistivity meter with many standard features that allow it to function as a stand alone monitoring system, or with use of a local PC and optional software, as an unattended monitoring system. The system may be remotely accessed for data retrieval and system updates.

The Syscal Pro features high transmitting power, up to 1,000V, at a maximum 2.5A, and 250W. Power that is often needed for cross hole applications, and for the long arrays as may be needed to monitor large sites. It also offers two separate alarm times that may be scheduled during a twenty four hour period. Connection to an external modem is standard. The unit may be equipped with internal switches to support up to 192 electrodes. It will also support connection of external switching boxes supporting up to 4,000 electrodes. Thus, for many sites the Syscal Pro in its standard form may be quite adequate.

On sites that require more than one type of array to be run, or sites that may need array schedules that vary with day of the week, or some other schedule, a software package called ComSys is offered. ComSys permits the operator to schedule a specific array to be run at whatever time is needed. The Comsys package requires a local PC, which will also be the storage device. If the PC is set up on a network, then the Syscal Pro may be remotely interrogated, new arrays may be downloaded, and the sampling schedule may be revised.

USB Comsys module for Syscal Pro / Syscal Pro-Switch unit

The USB Comsys module is an accessory of the Comsys Pro utility package. This package contains also a set of communication cables, a 12V battery and a charger.

This module has to be used for real-time communication between a Syscal Pro unit and a computer running with the Comsys Pro software. This module allows an electrical isolation about the PC connected to the mains.

Note:
The module has to be supplied by its own 12V separate battery (neither use the external battery supplying the Tx part of the Syscal ; this would induce some high disturbances on the measurement).

This module has to be used with the following system:
- Syscal Pro Switch (with or without Switch Pro)
1 USB port is required for Pc communication.

to 3 pins plug of Syscal Pro (Com1)

to 12V separate battery



Rear side of the module with plugs for battery connection



Pc USB cable plug

Comsys module

PC – Comsys module USB cable (supplied with the Syscal Pro unit)

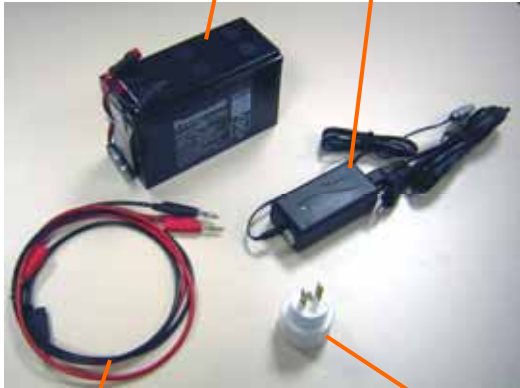


to USB port of Pc

to Comsys module

12 V battery

12 V charger battery



Supplying cables

Supplying pack

US plug adapter