

HeritageGeophysics

Prosys II Software

The **PROSYS II** software is a program allowing to transfer, edit, process and export resistivity and chargeability data of the *IRIS Instruments* resistivity-meters (SYSCAL) and IP receivers (ELREC).

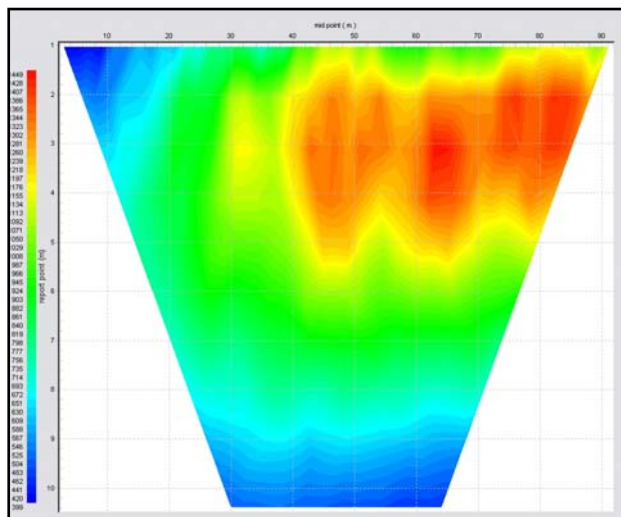
Minimum recommended PC configuration:

- Windows® XP
- 1 GHZ Microprocessor
- RAM memory: greater than 512 Mb
- 1280 x 1024 resolution screen

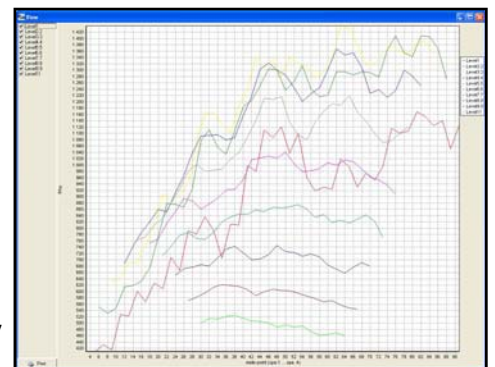
The data download is done by a serial link RS-232 cable or by a USB link.

The main functions of the **PROSYS II** software are the following ones:

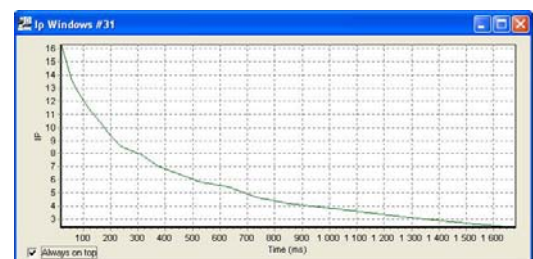
- Data download
- Numeric and graphic presentation (raw parameters, resistivity, chargeability,...)
- Processing (filter on threshold values, apply a sliding or median average, reject a node, reject the gapfiller quadripoles, create a batch file with a specific filtering to apply to a set of files,...)
- Topography insertion
- Plot of the apparent resistivity and chargeability sections
- Export to various formats ("txt", Res2dinv,...) and visualization of the exported files



Plot of the apparent resistivity section



Plot of the resistivity profiles by depth level



Plot of the IP decay curve

Resistivity & Chargeability data managing PC software

Heriatge Group Inc., 625 Valley Rd., Littleton, CO 80124 USA

Phone: 720 320-2821 - Fax: 303 768-8345

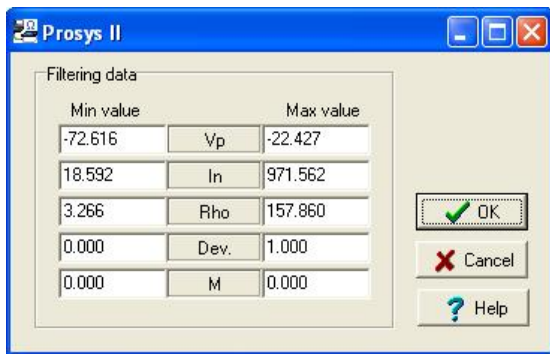
E-mail: Jerry@HeritageGeophysics.com - Web site: www.HeritageGeophysics.com

Prosys II Software

The **PROSYS II** software allows to read and process data obtained in the various measuring modes:

- Sounding (1D)
- Multi-Electrode (2D – 3D – surface/borehole)
- Continuous (dynamic acquisition driven by the SYSMAR *Iris Instruments* software)
- Monitoring (acquisition controlled by the COMSYS Sp or COMSYS Pro *Iris Instruments* software)

Once the data has been transferred and edited, several actions can be performed:



Filter the data according to one or several specific parameters by choosing the range of values to be kept.

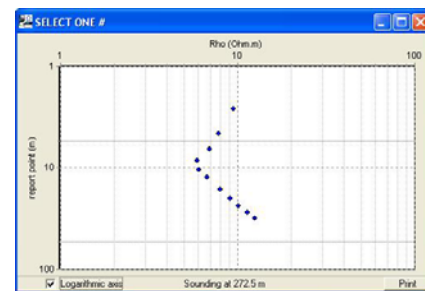


Modify the electrodes coordinates (insertion of the topography in that example).

The **PROSYS II** software allows to manage some long (standard + move sequences) acquisition by the possibility to add some data sets.

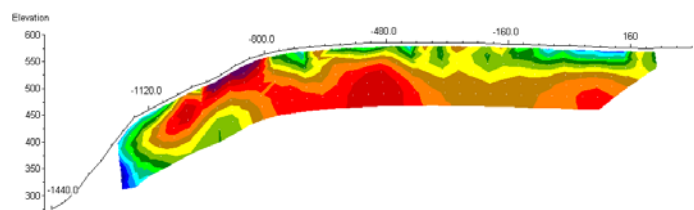
In case of 3D acquisitions, data can be plotted in XZ section (by Y position) or in XY slice (by depth level).

From a 2D profiling acquisition, sounding curves can be plotted and the data points can be extracted for a "txt" file creation to perform a 1D interpretation.



Data can be exported in "txt" format to be used from a spreadsheet software as *Excel* for example.

They can also be exported to the Res2dinv or Res3dinv format (software of *M.H. Loke*) in order to perform a 2D or 3D field data interpretation to get resistivity and chargeability sections or slices.



Section of resistivity data interpreted by Res2dinv

Heritage Group Inc. - 625 Valley Rd., Littleton, CO 80124 USA

Phone: 720 320-2821 - Fax: 303 768-8345

E-mail: Jerry@HeritageGeophysics.com - Web site: www.HeritageGeophysics.com